

PAN-POT ou modérément chantant

Play for 3 jugglers and a pianist
Length : 55 mn

Technical Rider

Stage manager : François DAREYS
06 30 09 25 95
f.dareys@hotmail.fr

Stage manager (substitute) : Julien DUPRAT
06 62 57 35 88
juljuldesebeilles@yahoo.fr

STAGE

The Company provides

- 1 solid wooden floor 9m open/7m deep/27mm thick (7.50m/6m is also possible)
(42 panels 1.50m/1m, 22Kgs/unit)
- 2 black half drops 9m/7m as side panels
- 24 steel booms (16 x 0.75m + 8 x 2.75m)
- 2 nets 9m/0.70m
- 2 borders on floor 9m/0.70m

If screwing on floor is not permitted, we need 30Kgs ballast for each boom

Dimensions

Minimum

Wall to wall: 13.50m

Depth from back drop to pianist: between 9m and 11m (according to piano' size)

Height under spot: 5.20m, under border: 5m

Distance between company's floor and 1st row: 3m

Black box

Black leg and border setting

4 wings

3 borders

Maximum width of frame: 10.50m (9m when floor reduction is necessary)

Maximum width of frame: 12.50m in case of gap in the masking on proscenium;

Then add a 5th wing as a frame (refer to lightings plot)

Maximum width between side half drops: 14m

If the stage floor is not painted in black, we need dance floor to set around our floor + black tape

The group "half drop-net-net's border-booms" is a recovery system of juggling balls (in left and right wings)

If half drops need to be dead hung, provide 2 bars of 8m long + ropes

No crossover on wings

No safety procedure for get in and set up

LIGHTINGS

28 channels 2Kw, **1** channel 5Kw + Bows lights (channel n°9)

1 Fresnel 5Kw

2 PC 2Kw

10 PC 1Kw (or 10 Profiles 1Kw 15°/40°, or 25°/54° according to height= faster focus)
+ Bows lights (**2** PC 2Kw or **5** PC 1Kw)

4 Symmetrical Floods 1Kw

2 Profiles 25°/54°

16 PAR 64 CP 62

9 PAR 64 CP 61

8 stage lines (6 channels) per side

1 desk: cues + sub-masters (Presto / AVAB), manual X-Fade + GO key

The company provides 8 booms for side lights: per boom, height: 1 PAR CP 61 at 0.60m,
1 PAR CP 62 at 2.50m

IMPERATIVE: for focus (between 5.50m and 7m high), on company's floor: only a ladder or light scaffolding. Otherwise, focus before setting up the floor. Then we have to mind changes on the schedule's crew

Lights and sound desks must be side by side (1 manager)

SOUND

1 Piano of concert's quality, recent, ¼ de queue minimum, ¾ maxi, according to the house's volume, **consult the pianist** (piano's tune obligatory, the d-day, between 1st and 2nd call)

1 CD player

1 MD player auto-pause

1 FOH system + Boomer

4 Speakers minimum 400w (MTD 112, CX12, UPM...)/**3** Groups:

-2 speakers (Left and Right) on stand behind the back drop

-1 under piano

-1 on floor, 1st left wing

They are not used as stage monitors but as leaders. FOH is a light support

1 appropriate sound desk

1 intercom stage/control room (for start and curtain up if possible)

1 washing machine

1 dryer

1 iron + table

SCHEDULE

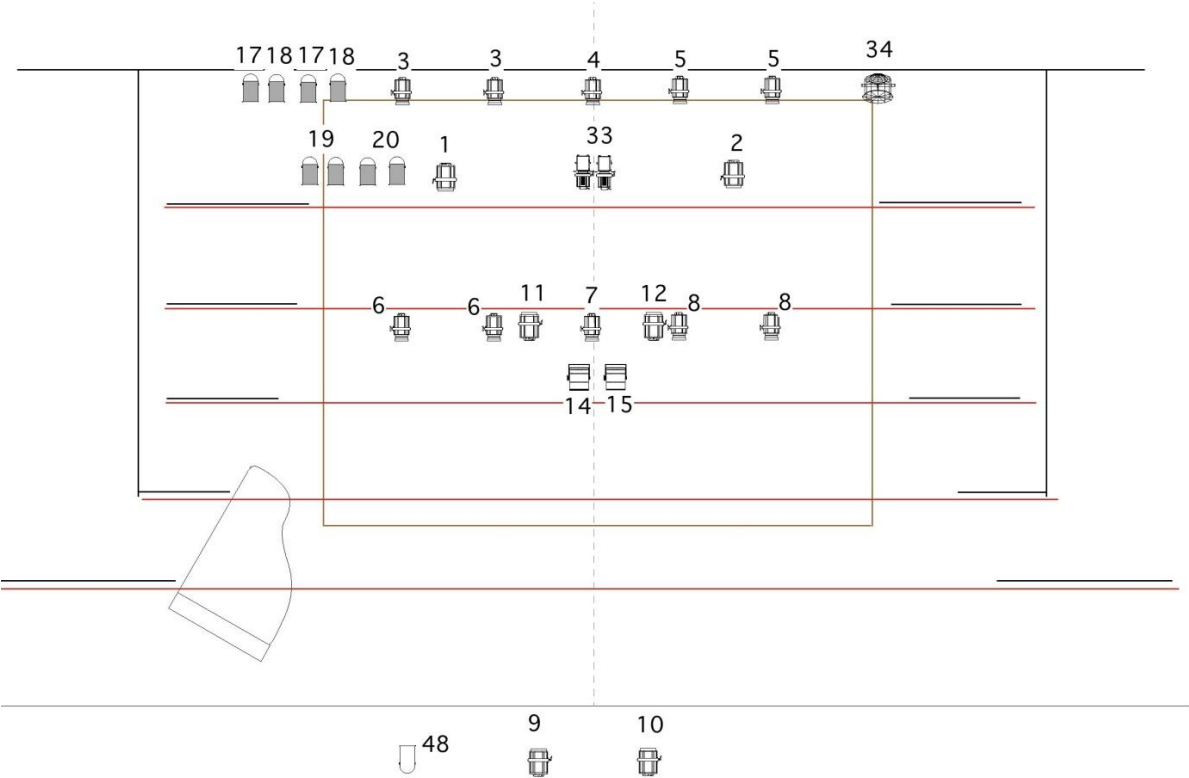
D Day-1 Stage and facilities on duty for the get in
3 minimum calls: 1 of pre-setting and pre-hanging, 2 with company' stage manager

<p>Morning :</p> <ul style="list-style-type: none"> 1 Master Electrician 2 Electricians 1 Assistant Stage Manager 2 Stagehands 1 Flyman 	<p>Pre-hanging + stage lines Pre-setting of Black Box</p>
<p>Afternoon :</p> <ul style="list-style-type: none"> 1 Company Stage Manager 1 Master Electrician 2 Electricians 1 Assistant Stage Manager 2 Stagehands 1 Flyman 	<p>Get-in Set up of: group of recovery system of balls side lights + Patch wooden floor Check of trims</p>
<p>Evening :</p> <ul style="list-style-type: none"> 1 Company Stage Manager 1 Master Electrician 1 Electrician 	<p>Focus</p>

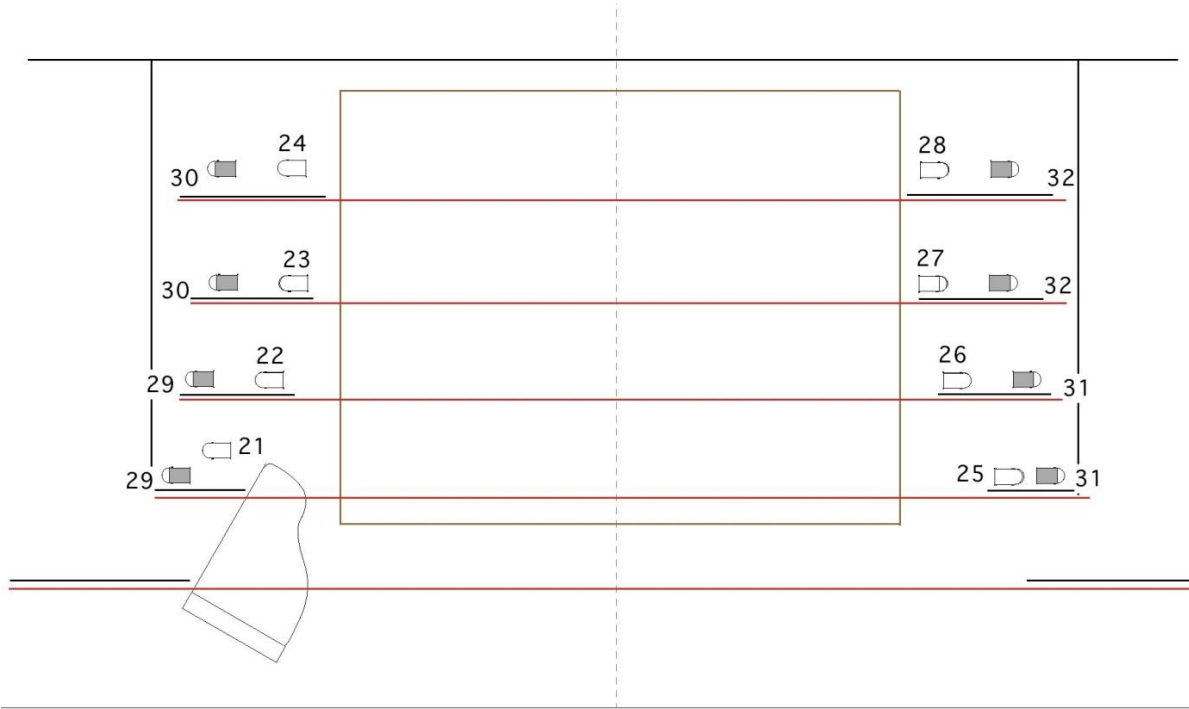
D Day / 3 minimum calls

<p>Morning :</p> <ul style="list-style-type: none"> 1 Company Stage Manager 1 Sound Master 1 Master Electrician 	<p>Focus end Sound set up and check Lights cues recording Piano delivery in late call</p>
<p>Lunch break</p> <ul style="list-style-type: none"> 1 piano tuner 	<p>Piano tune</p>
<p>Afternoon :</p> <ul style="list-style-type: none"> 1 Company Stage Manager 1 Sound Master 	<p>Warm-up/sound cues Run through (extracts)</p>
<p>Evening :</p> <ul style="list-style-type: none"> 1 Company Stage Manager 1 Master Electrician 1 Sound Master 1 Assistant Stage Manager 	<p>Curtain up desirable if possible Show length: 55 mn</p>
<p>Strike after the show :</p> <ul style="list-style-type: none"> 1 Company Stage Manager 1 Master Electrician 1 Electrician 1 Assistant Stage Manager 2 Stagehands 	<p>Estimation: 2 hours</p>

Spotlights on bars



Side lights



PATCH, FILTERS

Patch	Dimmer	Designation	Position	Filters
1		PC 2KW	Bar	LEE 156
2		PC 2KW	Bar	LEE 156
3		PC 1000	Bar	Aluminium Tape
4		PC 1000	Bar	Alu Tape
5		PC 1000	Bar	Alu Tape
6		PC 1000	Bar	Alu Tape
7		PC 1000	Bar	Alu Tape
8		PC 1000	Bar	Alu Tape
9		5 PC 1000	FOH Bows	Barndoors
10, 12, 13, 15, 16	Free =	Forget the plot		
11		2 symmetrical floods	Bar	ROSCO 56
14		2 symmetrical floods	Bar	LEE 026
17		2 PAR CP62	Bar	
18		2 PAR CP62	Bar	
19		2 PAR CP62	Bar	
20		2 PAR CP62	Bar	
21		PAR CP61	Boom 0.60m	
22		PAR CP61	Boom 0.60m	
23		PAR CP61	Boom 0.60m	
24		PAR CP61	Boom 0.60m	
25		PAR CP61	Boom 0.60m	
26		PAR CP61	Boom 0.60m	
27		PAR CP61	Boom 0.60m	
28		PAR CP61	Boom 0.60m	
29		2 PAR CP62	Boom 2.50m	
30		2 PAR CP62	Boom 2.50m	
31		2 PAR CP62	Boom 2.50m	
32		2 PAR CP62	Boom 2.50m	
33		2 Profiles 25°/54°	Bar	
34		5 KW FRESNEL	Bar	LEE 140
48		PAR CP61	Bar or FOH	



Wooden floor on light stage floor covered on edges by black dance floor